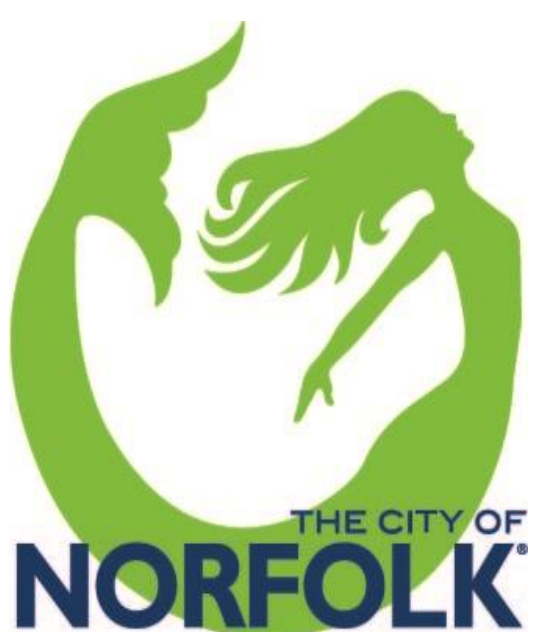
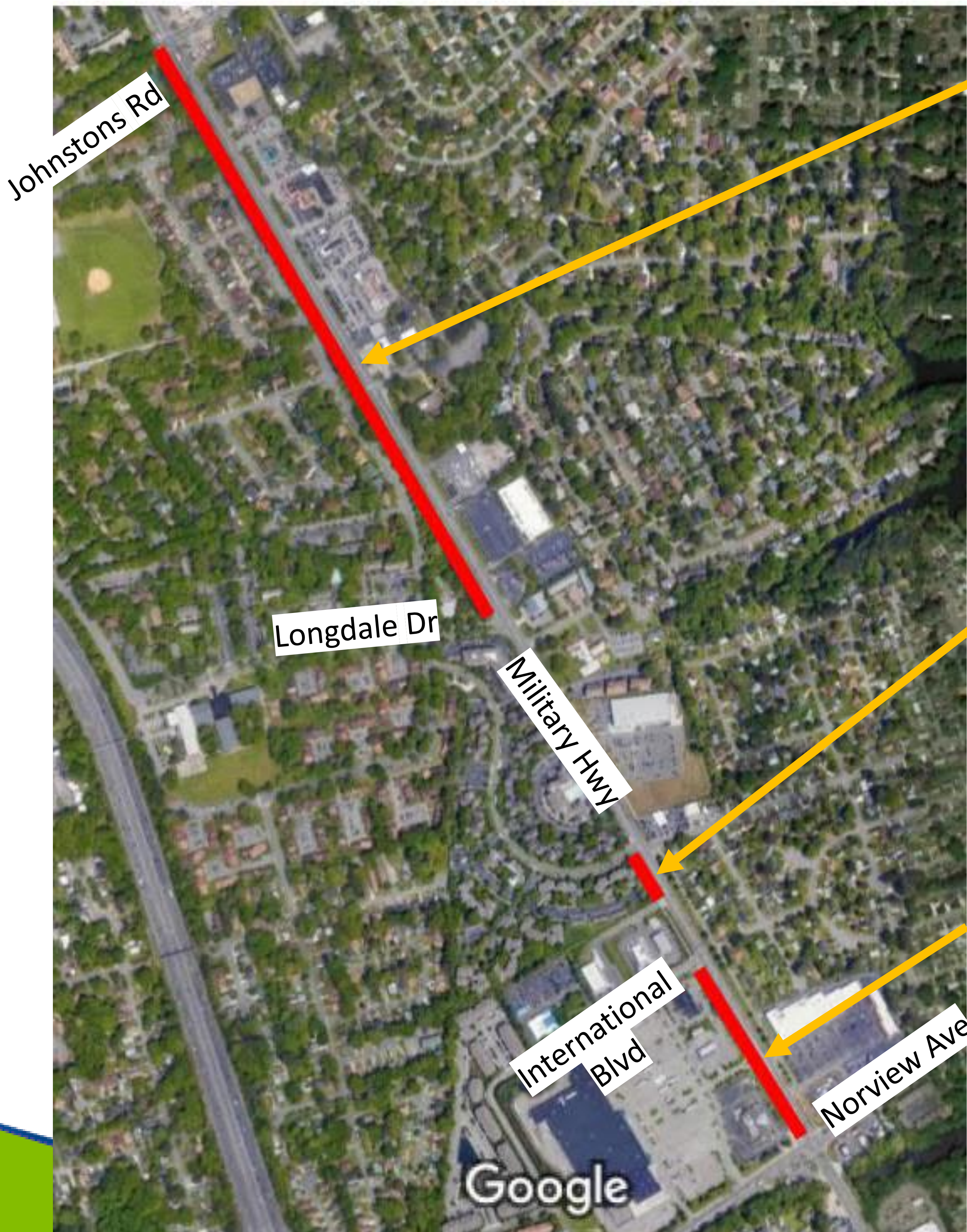


Multimodal Corridor Improvements

UPC 112759



Military Highway Sidewalk



Johnstons Rd to Longdale Dr

- Sidewalk on west side of Military Hwy
- Ped Heads and Push Buttons to cross to Springmeadow Blvd
- Provide ADA Bus Pad
- 76 Trees to be removed and 76 Trees to be planted between Johnstons Rd and Langdale Dr

Crescent Way to Wawa Entrance North

- Sidewalk on west side of Military Hwy
- Update Curb ramps at Crescent Way
- Provide ADA Bus Pad

International Blvd to Norview Ave

- Sidewalk on west side of Military Hwy
- Tie into existing bus shelter
- Ped Heads, Push Buttons, Crosswalks at International Blvd