

MILITARY HIGHWAY BRIDGE REHABILITATION

LOCATION

Woodbine area - Military Highway bridge northbound side over the Elizabeth River near River Forest Shores and south of Wayside Park.

PROJECT INFORMATION

The Military Highway bridge is undergoing rehabilitation to repair structural elements and applying waterproofing sealants. The project will repair and protect concrete elements and extend the useful life of the bridge.

SCOPE OF WORK

- Repair concrete spalls, cracks, and delaminations in the bridge superstructure
- Install an epoxy overlay on the bridge deck
- Apply waterproofing sealant to concrete elements
- New lane striping

PROJECT STATUS:

Planned

PROJECT SCHEDULE

Start Date: June 19, 2023

Completion Date: Mid September 2023

PROJECT COST

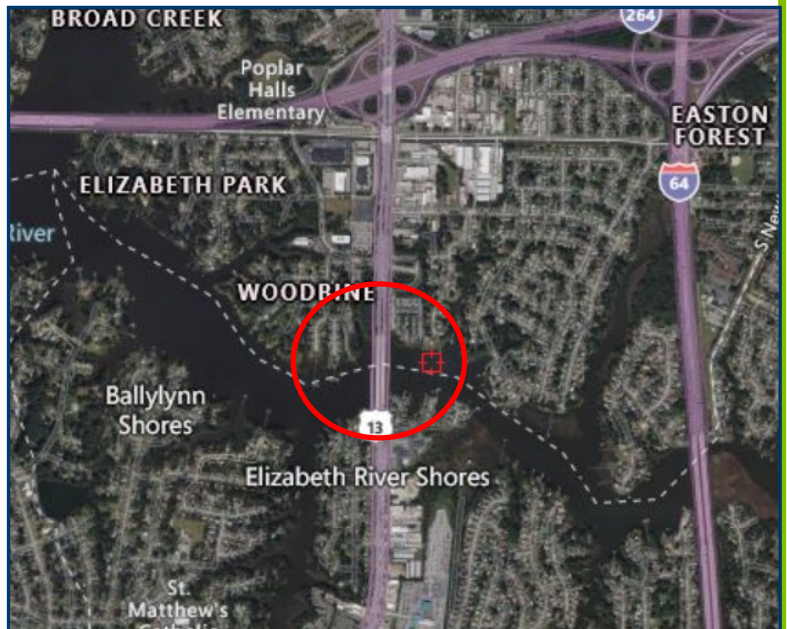
\$850,000

CONSTRUCTION IMPACTS/TRAFFIC

- Construction will take place Monday—Friday from 7:00AM to 5:00PM.
- Off-duty police and flaggers may assist with traffic.
- Motorists should expect alternating lane closures and intermittent traffic stoppages.
- Alternating lane closures and traffic shifts will remain in place 24/7.
- Traffic lanes approaching the bridge will taper and merge.
- **Phase 1a (Duration approximately 2 months):** Two inside lanes closed northbound. Southbound side all lanes open.
- **Phase 1b (Duration approximately 2 months):** Two outside lanes closed northbound. Southbound side all lanes open.

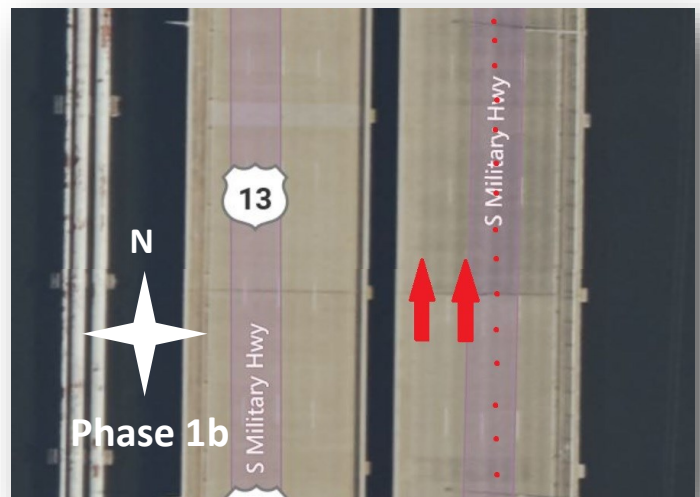
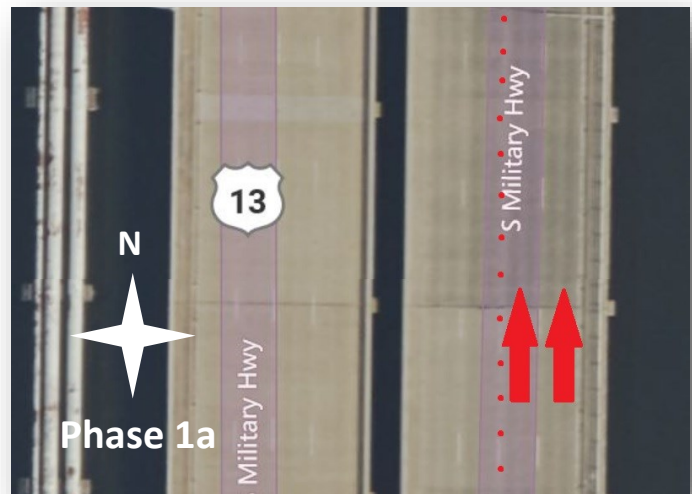
NEIGHBORHOOD CIVIC LEAGUE

- Woodbine Civic League
- River Forrest Shores/Wayside Manor Civic League
- Ward 4
- Superward 7



LEGEND

-  Work Area
-  Open Lanes



Project No. 22216 | Updated September 8, 2023



PROJECT MANAGER

Paul Britton, P.E., Public Works
paul.britton@norfolk.gov
757-419-1540

CONSTRUCTION MANAGER

Tyrone Walker, Public Works
tyrone.walker@norfolk.gov
757-373-6739

CONSTRUCTION INSPECTOR

Jim Ellenburg, Public Works

DESIGN ARCHITECT/ENGINEER

Josh Hill, P.E. Moffatt & Nichol
jhill@moffattnichol.com
757-628-8222