

AZALEA GARDENS RESURFACING

LOCATION

Azalea Garden Road—Tallyho Terrace to N Military Highway

PROJECT INFORMATION

Resurfacing streets with a new layer of asphalt, promotes a smooth and safe driving experience.

SCOPE OF WORK

- Surface milling from curb to curb
- Install final layer of asphalt
- Replace pavement markings

PROJECT STATUS:

COMPLETE

PROJECT SCHEDULE

Start Date: Monday, April 29, 2021

Completion Date: Summer 2021

PROJECT COST

- \$267,234.96

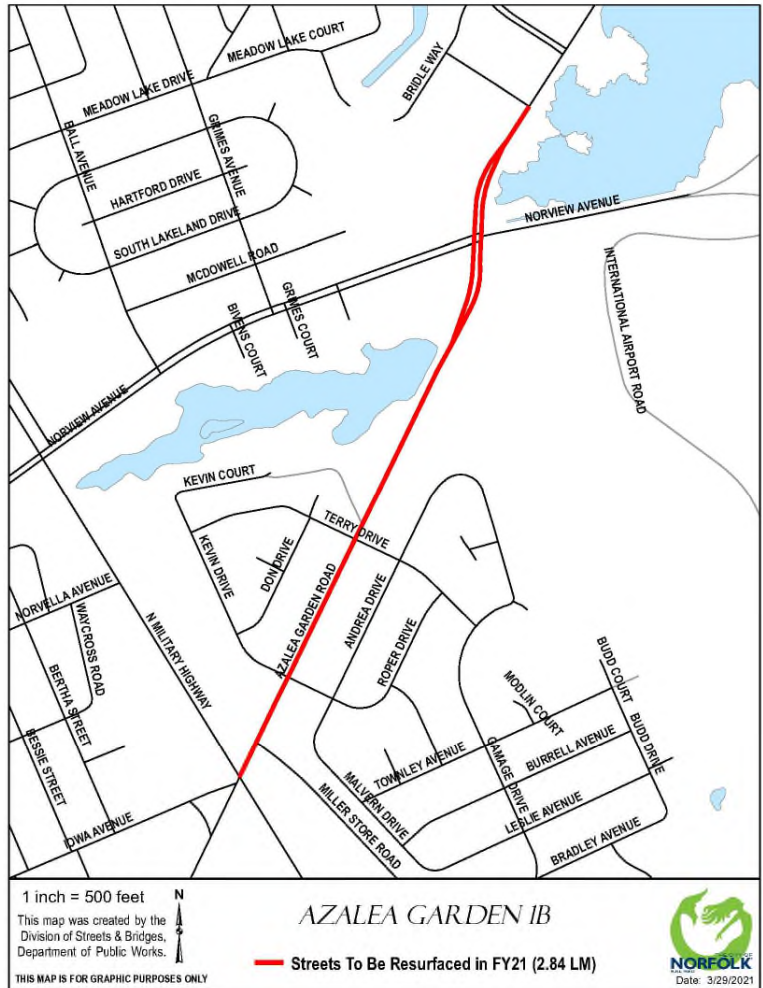
CONSTRUCTION IMPACTS/TRAFFIC

- Off-duty police and flaggers may assist with traffic.
- Work will be performed during the week day between the hours of 8:00 A.M. to 5:00 P.M. Motorists should expect alternating lane closures, intermittent traffic stoppages and are encouraged to take alternate routes to avoid construction.
- Access to residences and businesses will be maintained.
- Trash and recycling services will continue as normal.

NEIGHBORHOOD CIVIC LEAGUE

- Superward 7
- Wards 3 & 4
- Norvella Heights, Idlewood/Sandy Heights, Azalea Acres/Azalea Lakes, Bromley, Glengariff Civic Leagues

Updated August 3, 2021



PROJECT & CONSTRUCTION MANAGER

Melinda Hunter, Public Works
Melinda.Hunter@norfolk.gov
757-823-4060

CONSTRUCTION INSPECTOR

Jorge Muniz, Public Works
Jorge.Muniz@norfolk.gov
757-705-1892

CONSTRUCTION CONTRACTOR

VA Paving