

# Proposed FY 2022 Capital Improvement Plan (CIP) Interactive Dashboard User Guide

## Overview

The interactive dashboard provides project details for the Proposed FY 2022 Capital Improvement Plan (CIP). The dashboard has three pages that users can explore by toggling the arrows at the bottom of the screen.

Page one is an overview of the tool and a list of the CIP projects by department, location, and amount. For more information on page one, see the Page One section.

Page two is an interactive map of the CIP projects. For more information on how to use the map, see the Page Two section.

Page three is a list of the unmapped projects by department. For more information on how to use the unmapped page, see the Page Three section.

## Page One

Page One provides an overview of the tool on the left (section one) and a list of all Proposed FY 2022 CIP projects on the right (section two). The figure below describes how to navigate page one.

View data by project amount in ascending or descending order by clicking on the arrow under "FY 2022 Proposed Amount"

Section 1

Section 2

Department/Project	Location	FY2022 Proposed Amount
<b>Cemeteries</b>	<b>Forrest Lawn Cemetery</b>	<b>\$250,000</b>
Improve Cemeteries Infrastructure	Forrest Lawn Cemetery	\$250,000
<b>Cultural Facilities Arts &amp; Entertainment</b>	<b>Clanfield, Citywide, Harbor Park, Larchmont Library, Norview/Five Points, Riverside Park - Corner of Bramblenton and Colby Ave, St. Paul's Area</b>	<b>\$750,000</b>
Improve Harbor Park	Harbor Park	\$100,000
Support Citywide Public Art	Chesterfield, Citywide, Larchmont Library, Norview/Five Points, Riverside Park - Corner of Bramblenton and Colby Ave, St. Paul's Area	\$250,000
<b>Finance Department</b>	<b>Citywide</b>	<b>\$9,300,000</b>
Acquire Equipment and Technology	Citywide	\$9,300,000
<b>General</b>	<b>Chrysler Museum, Citywide, Marriott Waterside, St. Paul's Area</b>	<b>\$15,850,000</b>
Acquire School Buses	Citywide	\$1,000,000
Address School Major Maintenance	Citywide	\$3,000,000
Fund Chrysler Museum Capital Campaign Match	Chrysler Museum	\$850,000
Improve Marriott Waterside Conference Center	Marriott Waterside	\$6,100,000
Improve Neighborhoods Citywide	Citywide	\$1,100,000
Revitalize St. Paul's Community	St. Paul's Area	\$2,000,000
<b>General Services &amp; Administration</b>	<b>Many Locations</b>	<b>\$5,400,000</b>
Improve and Maintain the Zoo	Virginia Zoo	\$1,500,000
Improve Animal Care Center Infrastructure	Animal Care Center	\$100,000
Maintain Municipal Facilities	Many Locations	\$2,850,000
Repair and Replace Underground Storage Tanks	Central Plant	\$100,000
Support Jail Improvements	Norfolk City Jail, Sheriff's Training Facility	\$450,000
<b>NRHA</b>	<b>Wards Corner, Willoughby</b>	<b>\$1,021,000</b>
Acquire Blighted Properties in Willoughby	Willoughby	\$700,000
Provide Funds for Acquisition in Wards Corner	Wards Corner	\$281,000
<b>Parking Facilities Fund</b>	<b>Citywide</b>	<b>\$2,900,000</b>
Maintain Parking Facilities	Citywide	\$2,900,000
<b>Planning and Community Development</b>	<b>Ocean View and Willoughby Spit</b>	<b>\$1,014,400</b>
Control Beach Erosion	Ocean View and Willoughby Spit	\$1,014,400
<b>Public Works</b>	<b>Many Locations</b>	<b>\$4,859,000</b>
Fund Preliminary Engineering	Citywide	\$600,000
<b>Total</b>	<b>Many Locations</b>	<b>\$176,484,000</b>

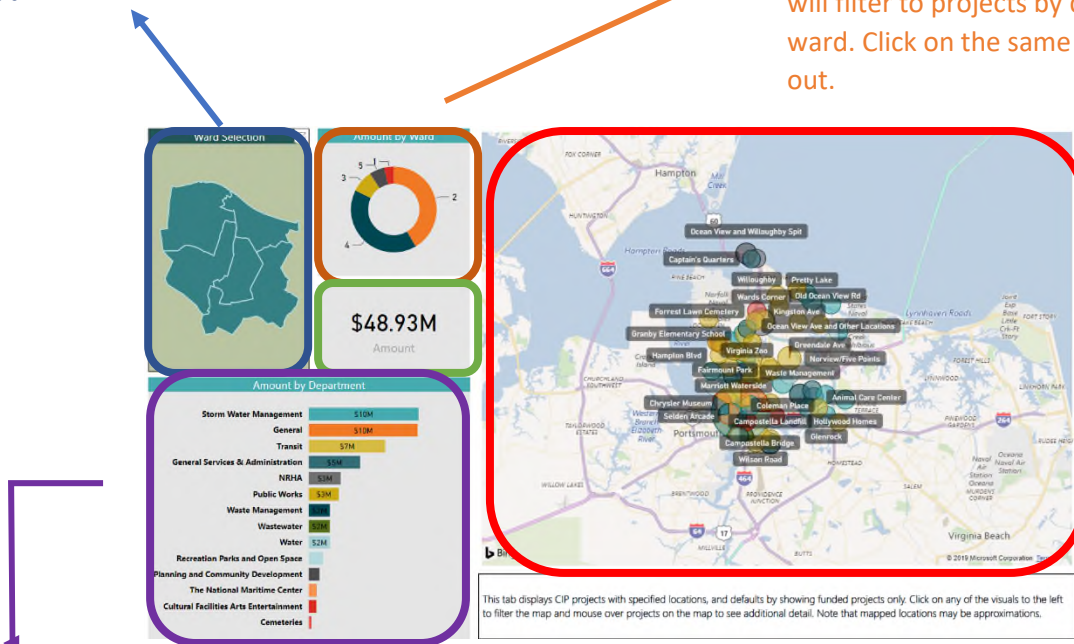
View data in alphabetical or reverse alphabetical by department or location by clicking on the arrow under department or location

Page two is an interactive map with five data areas:

1. Ward Selection
2. Amount by Ward
3. Amount (cannot select)
4. Amount by Department
5. Map

Click on a ward outline for the map to zoom in on the ward. The “Amount” will change to the proposed CIP funding for the ward selected and the “Amount by Department” will filter to projects by department in the ward. Click on the same ward to zoom back out.

Click on a ward number for the map to zoom in on the ward. The “Amount” will change to the proposed CIP funding for the ward selected and the “Amount by Department” will filter to projects by department in the ward. Click on the same ward to zoom back out.



You can zoom in and out on the map to see projects in a specific location. The dots on the map are sized relative to the proposed funding for each project. The color of the dot corresponds to the department. You can mouse over a project, and a tool tip will pop-up giving project details. The tool tip is explained below.

Click on a department for the map to zoom in on projects managed by the department. The “Amount” will change to the amount proposed CIP funding for the department. Click on the same department (or in the white space) to zoom back out.

**Tool TIP**

Project location

Master Project Name:  
Subproject name

Department name and number of projects at the location

Project amount

Project description

Forrest Lawn Cemetery	\$250K
Improve Cemeteries Infrastructure : Improve Forrest Lawn Cemetery Roads and Drainage	
Cemeteries	Provide funds to improve infrastructure at cemeteries owned and operated by the City of Norfolk. Funds will be used for roads, drainage, wall, and building improvements and repairs.
# of projects	1

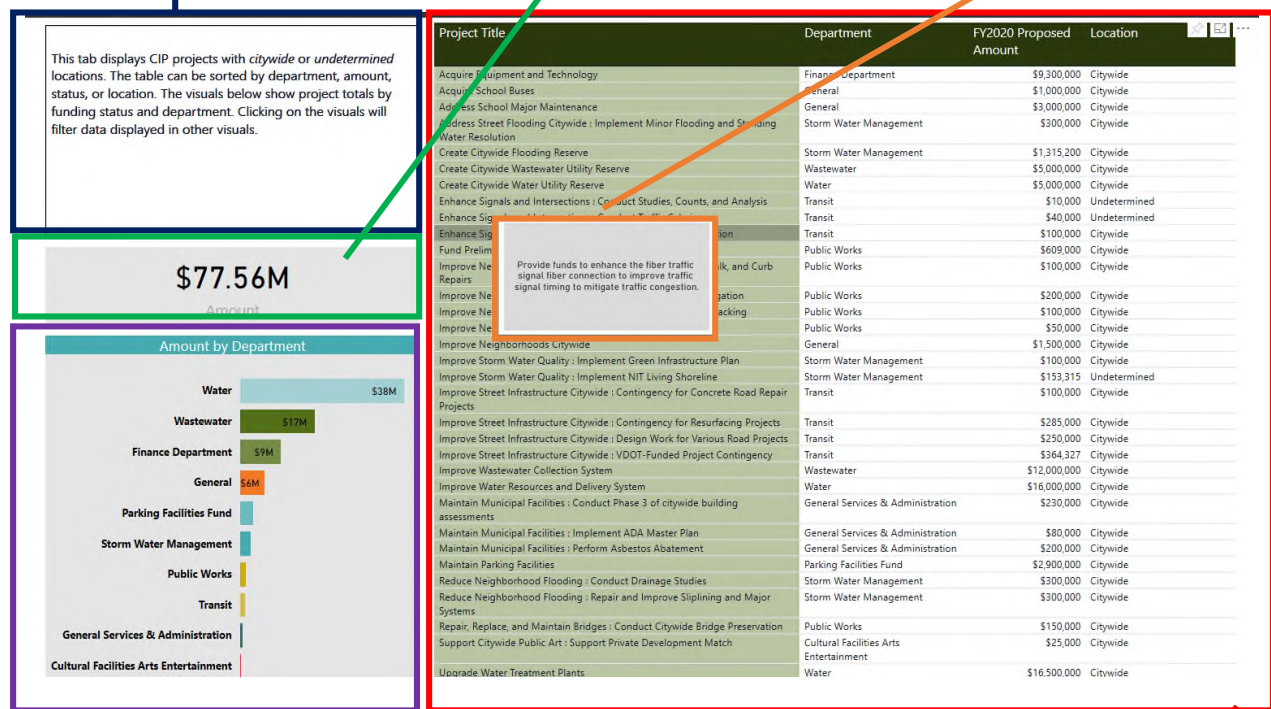
## Page Three

Page three provides details for projects that are not mapped. Projects may not be mapped for a variety of reasons, such as: a citywide locations, studies, reserves, or designation or data is still being collected. As more data is available, the dashboard will be updated with more mapped projects.

Page three has five sections:

1. Overview
2. Amount (cannot select)
3. Amount by Department
4. Project Details
5. Tool Tip

Overview of information on the page



Click on a department for the list to display unmapped projects in that department

Lists Project Title, Department, FY 2022 Proposed Amount, and Location based on selection. Data can be displayed alphabetically by Project Title (click on arrow under "Project Title"), alphabetically by Department (click on arrow under "Department"), by amount (click on arrow under "FY 2022 Proposed Amount"), or by Location (click on arrow under location).

Amount: displays the project amount base on selections made

Mouse over any row to display a tool tip with the project description